

About us

- Corporate Profile
- DAIWA Group
- Business Out line
- Primary Products

Corporate Profile

- Registered head office
199-1 Nirematashinden, Wanouchi,
Anpachi, GIFU, JAPAN
- Established
23 Aug 1982
- Representative
Hajime Hosoi , President
- Sales(Non-Consolidated net)
40 Million US \$ (Fiscal year ended Jan 31, 07)
- ISO9001-2000 <JQA-3093>

Featuring of DAIWA

Resource

- World wide
- furnished All process
- Clean fab
- Large Assembly areas

Business

- Free choice
from only Parts ,Assy, Design
to Full Line

Technology

- Liquid control
- Wet process control
- Sn-reflow process control
- thin-work handling
- Plastics fabricate

DAIWA Group

- USA

Service



INFITECH, INC.(CA)

- CHINA

Nova Electron Tech (SUZHOU)

<http://www.nova-sz.com>



Fab

- KOREA

SIE Co.,Ltd (CHEWONGWON)



Fab

- JAPAN

Daiwa Electron Co.,Ltd

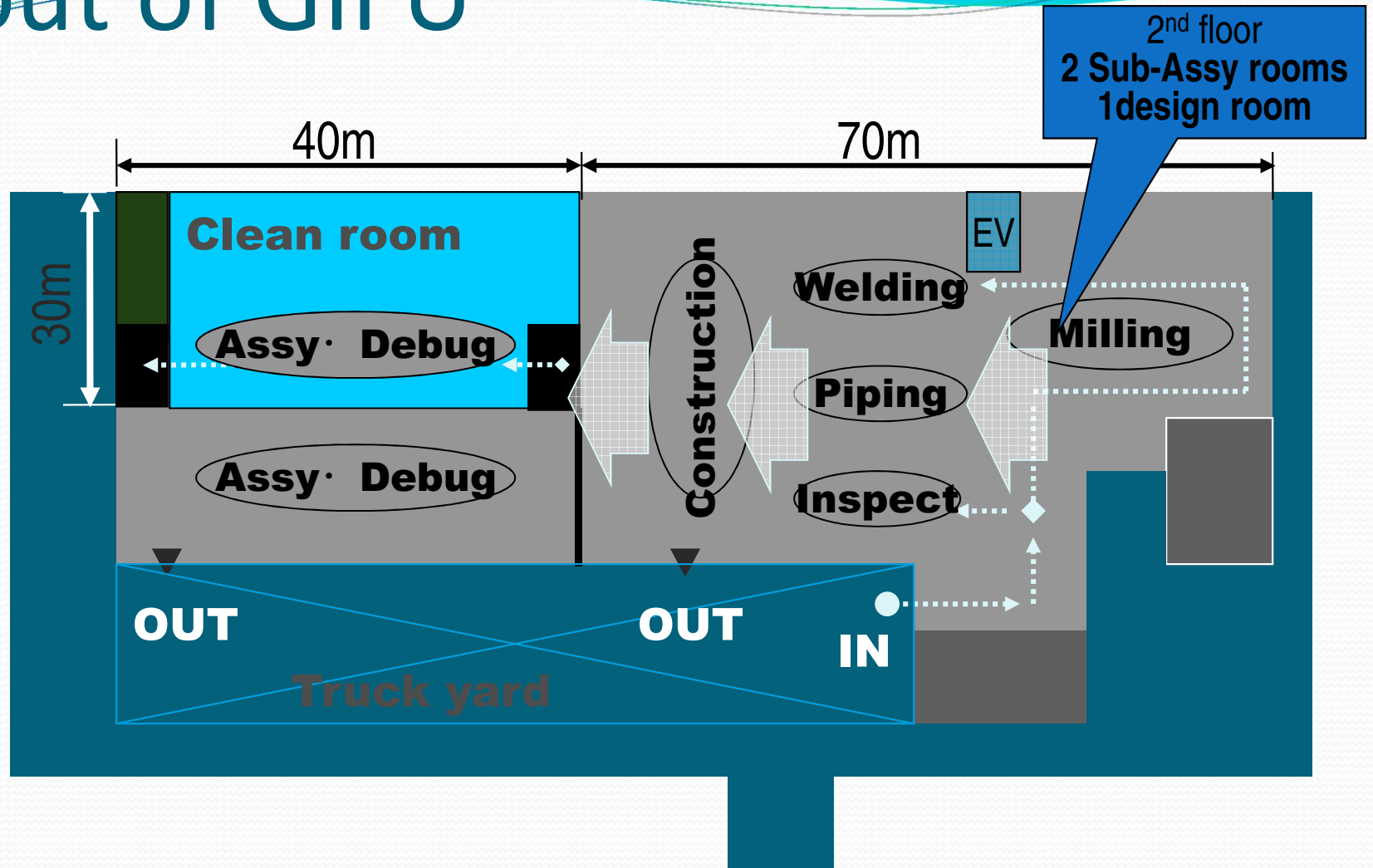
Fab

Gifu
Shiga

Fab 【Japan】

	Total Space	Clean room	
Gifu	5094m ²	750m ²	Class 10,000
Shiga	1378m ²	430m ²	Class 10,000

Layout of GIFU



Floor design concept : Flowing



Business Out line

Fabrication Business

- Equipment Assembly
- Custom-made Parts
- Maintenance Parts



Equipment Maker

for High-end process

Equipment Business

- Production equipment
- Maintenance & Repair
- Process Support



Device Maker

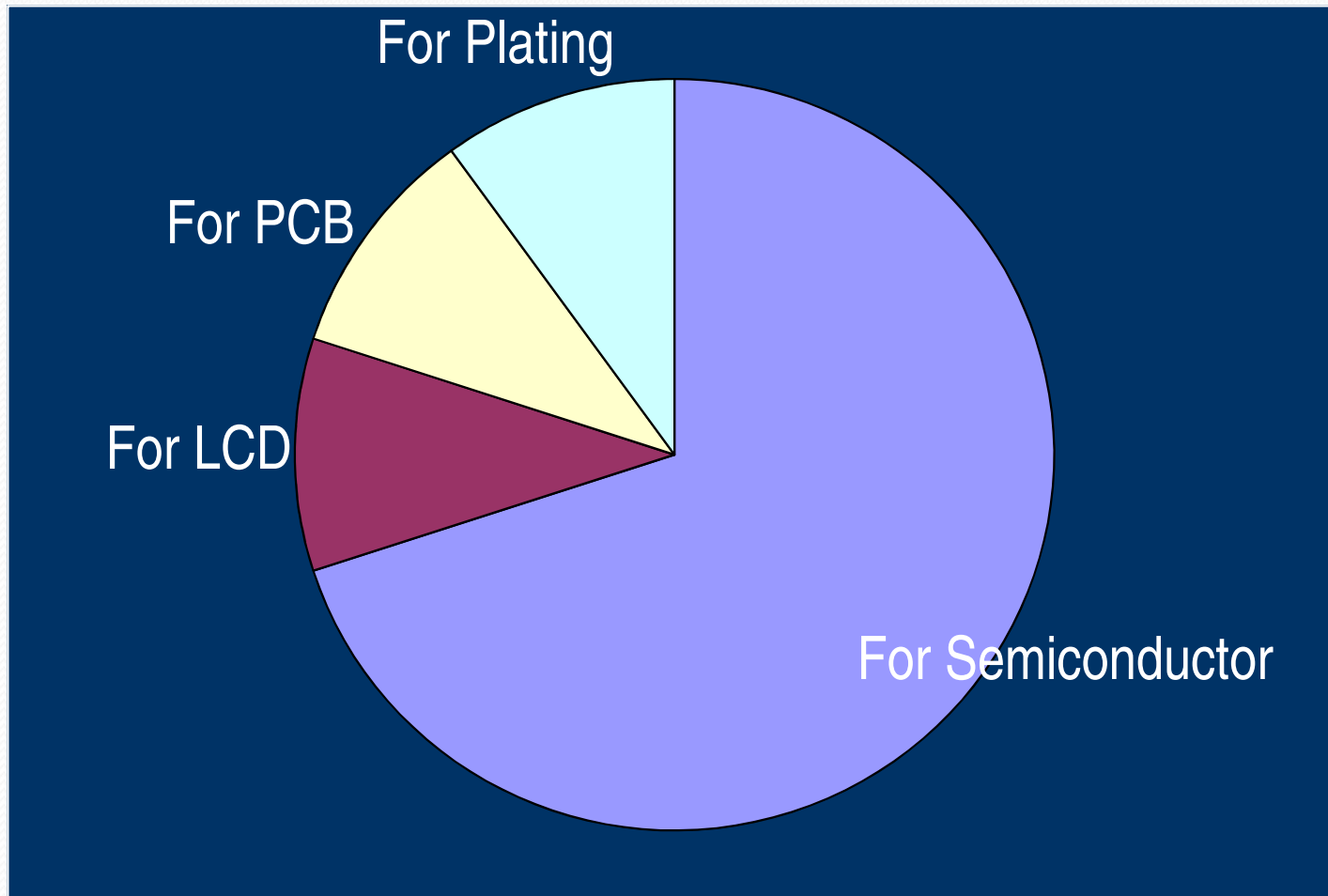
Semiconductor

LCD

PCB

Plating (for Devices)

Business Market





Fabrication Business

- **Assembly service**
- **Parts Fabrication service**
- **Design service**

Fabrication Business

Assembly service

- Equipment
- Sub unit



Parts Fabrication service

- Custom-made Parts
- Maintenance Parts



Design service

- Total Design
- Detail drawing



Equipment Maker



- For
- Semiconductor
 - Flat Panel Display
 - Other Devices





Equipment Business

- for Semiconductor
- for Chemical
- for FPD/PCB
- for Plating
- for Others

Primary Products for SEMI

【Wet Bench】



flexible design
user friendly
Quickly support

【Quartz Tube Cleaner】

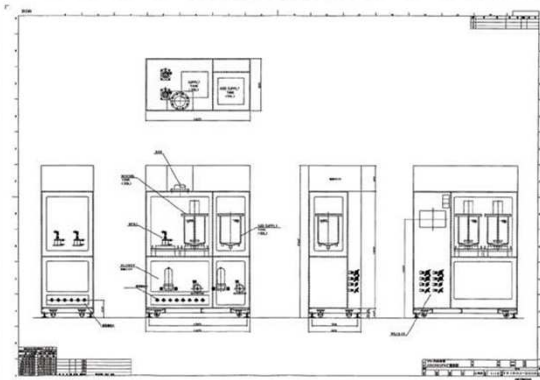


usability
leakless design
flexible design

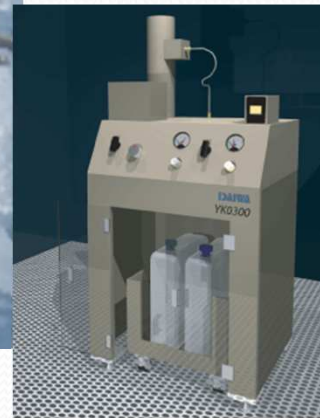
Primary Products for chemical

【Slurry Supply Unit】

【Chemical Supply Unit】
【Chemical collect Unit】



New



Reduce stress of slurry

Non-solidification of slurry

special linear pump

link with Process
easy maintenance
high safety

Primary Products for FPD/PCB

【Jet Scruber】

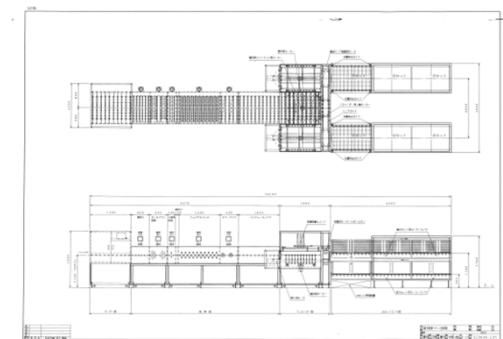
No.1 Share in 06 KOREA

【DAF DIW Cleaner】

High detergency
saving of the water
saving waste fluid processing cost



【Soft Etcher】



Primary products for Plating

Full Turn Key Solutions

- Reflow Tin Line for Coil
- Reflow Tin Line
for stamping(real to real)
- Other Electro Plating lines



Primary Products for others

【Exhaust Wet Scruber】

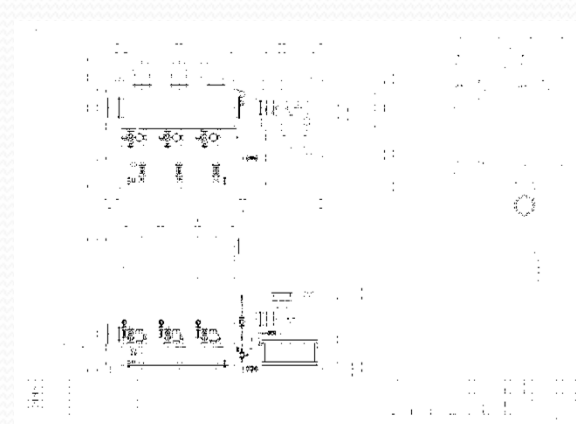
Saving of water for High density process

abundant line-up

<for HP>



<for Out-door>



【Draft Chamber】

